

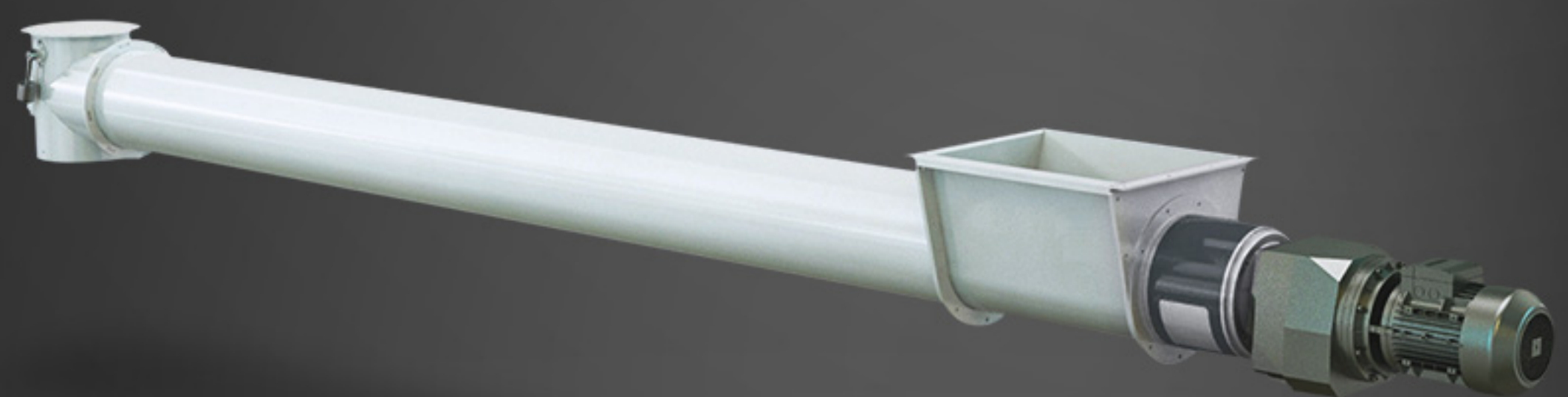
HSKTVA

TUBULAR SCREW CONVEYOR

- Tubular Screw Conveyor is used for conveying granular and powdered products in horizontal and perpendicular angled directions. It is generally placed under storage silos for discharge operations.

FEATURES

- Two-way Direction
- Compact Design
- Suitability for Perpendicular
- Angles
- Modular Structure
- Smooth Operation
- High Safety Standards
- Overflow Sensor

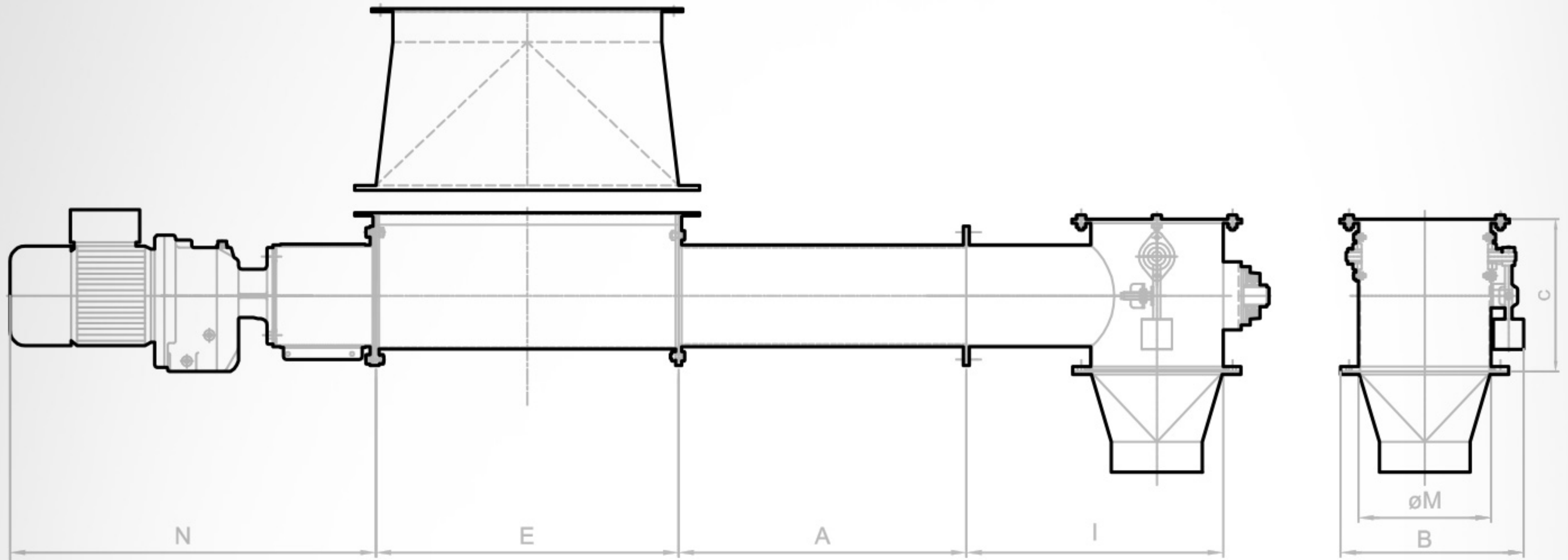


ADVANCED
SENSOR
TECHNOLOGY

HSKTVA

TUBULAR SCREW CONVEYOR

CONVOYEUR À VIS TUBULAIRE



| MODEL | DIMENSIONS mm. | | | | | | | TECHNICAL FEATURES | | | | |
|------------|--|-----|-----|------|--------------------|-----|-----|---------------------|---------------------|--------------------|--------------------|------------------------|
| | Module Length (mm) A | B | C | N | E | øM | I | Capacity t/h | | | | |
| | | | | | | | | Wheat V=0,45m/sn | Flour V=0,45m/sn | Bran V=0,45m/sn | Corn V=0,45m/sn | Semolina V=0,45m/sn |
| HSKTVA 150 | 1100, 1300, 1500, 1700, 1900, 2100 | 254 | 255 | 1000 | 500 800 1000 | 170 | 290 | 19 | 14 | 8 | 17 | 11 |
| HSKTVA 200 | | 304 | 305 | | | 220 | 320 | 35 | 25 | 14 | 31 | 20 |
| HSKTVA 250 | | 364 | 355 | | | 270 | 370 | 54 | 38 | 21 | 48 | 32 |
| HSKTVA 300 | | 414 | 405 | | | 320 | 420 | 77 | 55 | 31 | 69 | 45 |
| HSKTVA 350 | | 468 | 455 | | | 370 | 470 | 106 | 76 | 42 | 95 | 63 |
| HSKTVA 400 | | 525 | 505 | | | 420 | 520 | 138 | 98 | 55 | 124 | 82 |
| HSKTVA 450 | | 582 | 555 | | | 470 | 570 | 176 | 125 | 70 | 158 | 104 |
| HSKTVA 500 | | 639 | 605 | | | 520 | 620 | 218 | 155 | 86 | 195 | 129 |